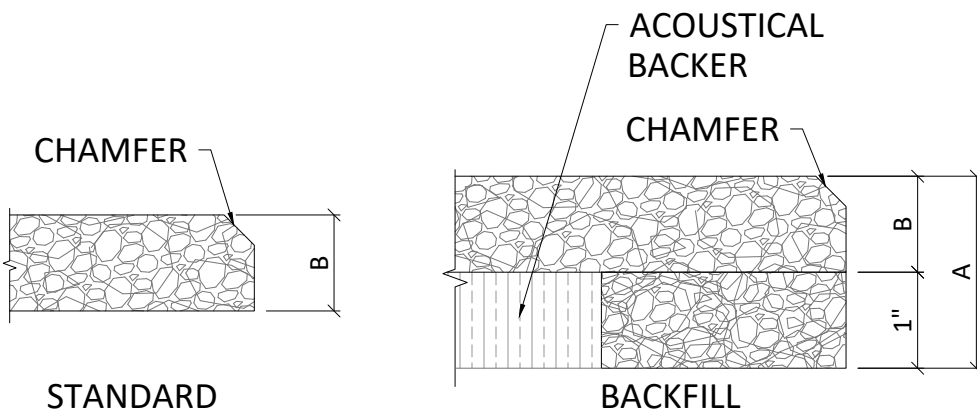


1 TYPICAL PANEL OPTIONS
SCALE: 3/4" = 1'-0"



FINISH OPTIONS	
PRIMED CLEAR	
PRIMED WHITE	
CUSTOM PAINTED	

PANEL OPTIONS	
A	B
2"	1"
2-3/8"	1-3/8"
3"	2"

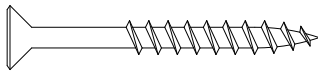
2 PANEL PROFILE OPTIONS
SCALE: 6" = 1'-0"

SCREW TYPE CHART

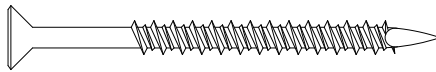
PANEL THICKNESS	SUBSTRATE	RECOMMENDED SCREW TYPE	RECOMMENDED SCREW LENGTH
1"	HAT CHANNEL OR THIN METAL	SELF-TAPPING	2"
1-3/8"	HAT CHANNEL OR THIN METAL	SELF-TAPPING	2-1/4"
2"	HAT CHANNEL OR THIN METAL	SELF-TAPPING	3"
1"	WALL BOARD OR WOOD FURRING	DRYWALL SCREW	1-5/8"
1-3/8"	WALL BOARD OR WOOD FURRING	DRYWALL SCREW	2-1/4"
2"	WALL BOARD OR WOOD FURRING	DRYWALL SCREW	3"
1"	CONCRETE	TAPCON	2-1/4"
1-3/8"	CONCRETE	TAPCON	2-3/4"
2"	CONCRETE	TAPCON	3-1/4"

SCREW SPACING CHART

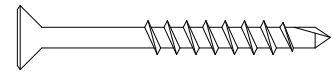
APPLICATION	MINIMUM O.C. SPACING	MINIMUM SCREW DISTANCE FROM EDGE OF PANEL
CEILING	12"	3/4"
WALL	24"	3/4"
WALL: HIGH TRAFFIC	12"	3/4"



#6 SHARP POINT DRYWALL SCREW RECOMMENDED FOR WOOD APPLICATION



#6 CMU SCREW RECOMMENDED FOR MASONRY APPLICATION



#6 SELF TAPPING SCREW RECOMMENDED FOR METAL APPLICATIONS)

1 FASTENER OPTIONS (NOT SUPPLIED BY ASI)
2 SCALE: 1" = 1'-0"



123 Columbia Court North, Chaska, Minnesota 55318 P. 800.527.6253

ENVIROACOUSTIC WOOD WOOL - DIRECT ATTACH WALL FASTENER TABLE

SCALE: AS NOTED

LAST REVISED: 7/6/2022

DRAWN BY: TL

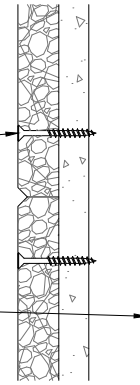
DO NOT SCALE DRAWING. FIGURED DIMENSIONS ARE TO BE FOLLOWED. READ THIS DRAWING IN CONNECTION WITH GENERAL ARCHITECTURAL PLANS, STRUCTURAL PLANS, AND OTHER RELATED DRAWINGS. THESE DRAWINGS REPRESENT ASI'S UNDERSTANDING AND INTERPRETATION OF THE ARCHITECTURAL DRAWINGS AND HOW ASI PRODUCTS RELATE TO THE PROJECT. COPYRIGHT ASI © 2022

SHEET NUMBER

2

SCREW (SEE FASTENER TABLE FOR TYPE AND SPACING)

TYP. WALL ASSEMBLY (BY OTHER)

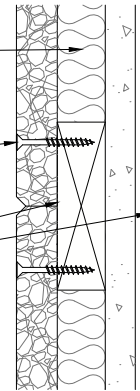


MOUNTING OPTION 1

CFAB ACOUSTICAL INSULATION (OPTIONAL)

SCREW (SEE FASTENER TABLE FOR TYPE AND SPACING)

FURRING (1" X 3 1/2" SHOWN) FASTENED TO WALL ASSEMBLY (FURRING, FASTENERS, AND WALL ASSEMBLY BY OTHER)

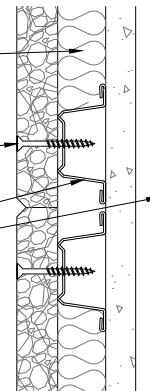


MOUNTING OPTION 2

CFAB ACOUSTICAL INSULATION (OPTIONAL)

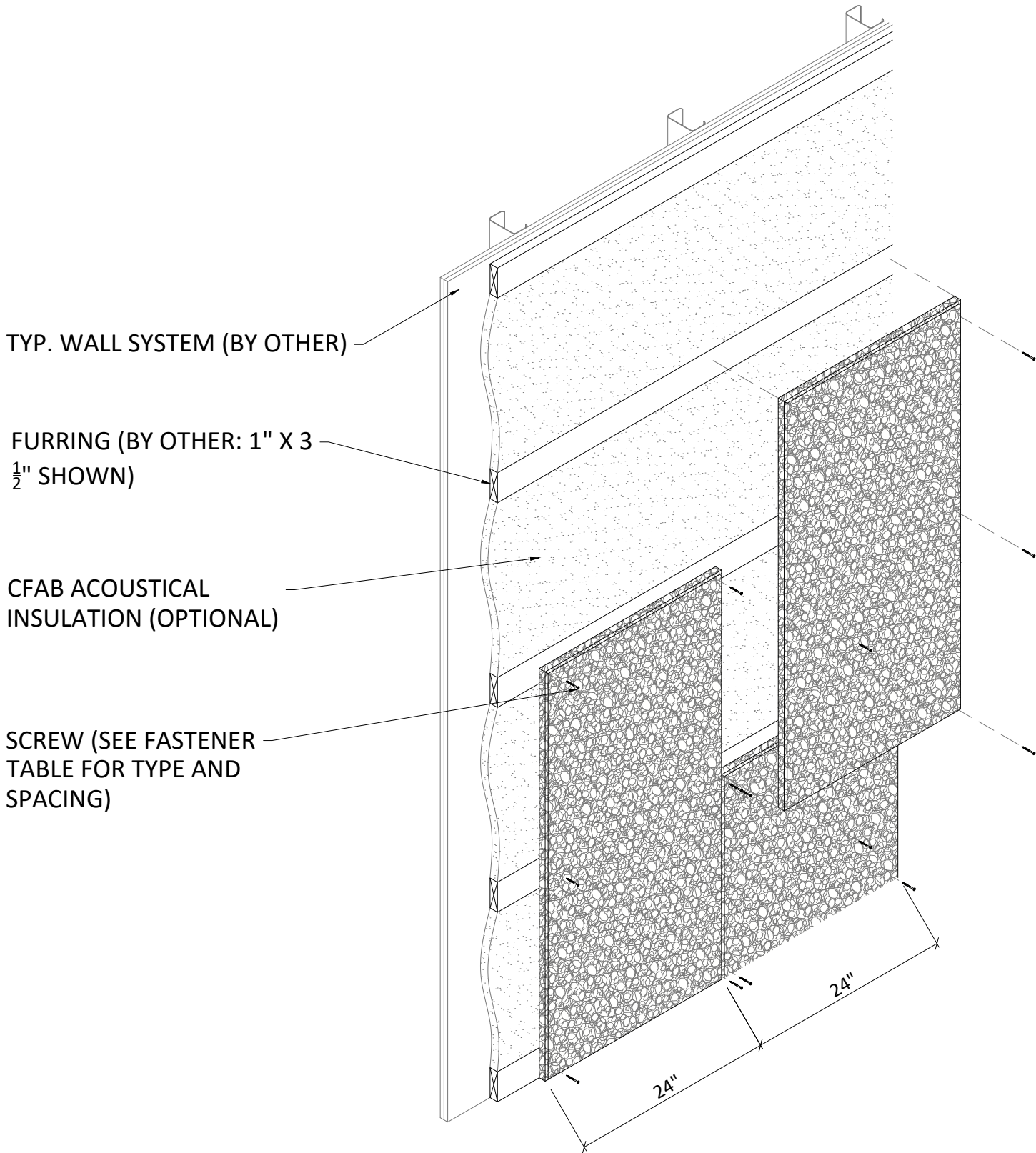
SCREW (SEE FASTENER TABLE FOR TYPE AND SPACING)

HAT CHANNEL FASTENED TO WALL ASSEMBLY (CHANNEL, FASTENERS, AND WALL ASSEMBLY BY OTHER)



MOUNTING OPTION 3

1 MOUNTING OPTIONS
3 SCALE: 3" = 1'-0"



TYP. WALL SYSTEM (BY OTHER)

FURRING (BY OTHER: 1" X 3 1/2" SHOWN)

CFAB ACOUSTICAL INSULATION (OPTIONAL)

SCREW (SEE FASTENER TABLE FOR TYPE AND SPACING)

24" 24" 24"

1 WALL SYSTEM ISOMETRIC
4 SCALE: 3/4" = 1'-0"



ENVIROACOUSTIC WOOD WOOL - DIRECT ATTACH WALL ISOMETRIC

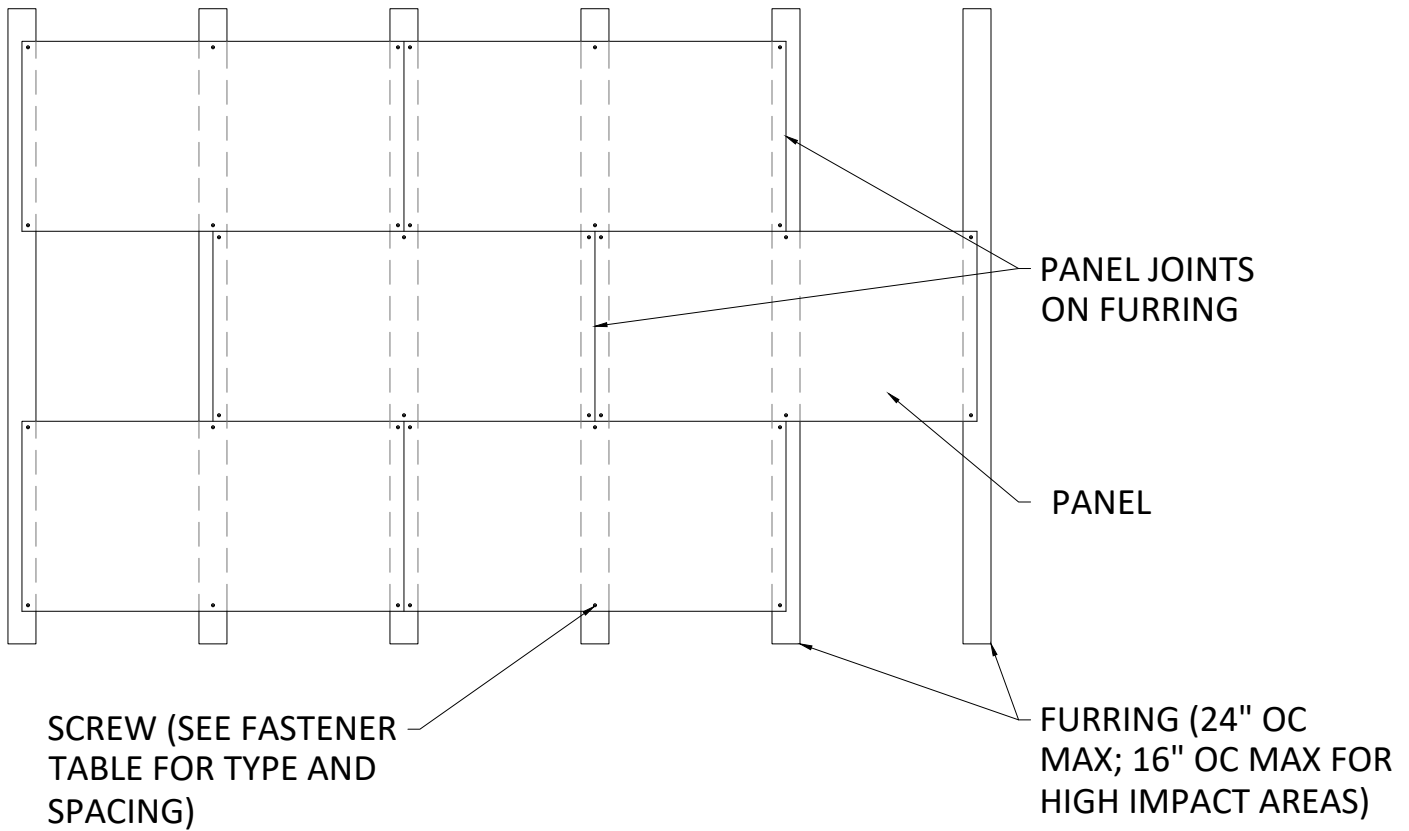
SHEET NUMBER
4

SCALE: AS NOTED

LAST REVISED: 7/6/2022

DRAWN BY: TL

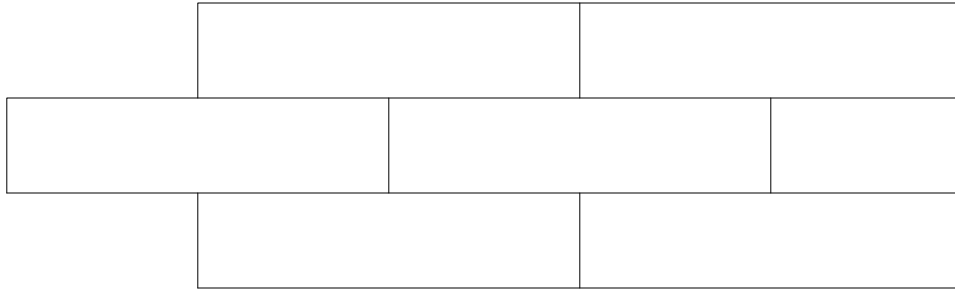
DO NOT SCALE DRAWING. FIGURED DIMENSIONS ARE TO BE FOLLOWED. READ THIS DRAWING IN CONNECTION WITH GENERAL ARCHITECTURAL PLANS, STRUCTURAL PLANS, AND OTHER RELATED DRAWINGS. THESE DRAWINGS REPRESENT ASI'S UNDERSTANDING AND INTERPRETATION OF THE ARCHITECTURAL DRAWINGS AND HOW ASI PRODUCTS RELATE TO THE PROJECT. COPYRIGHT ASI © 2022



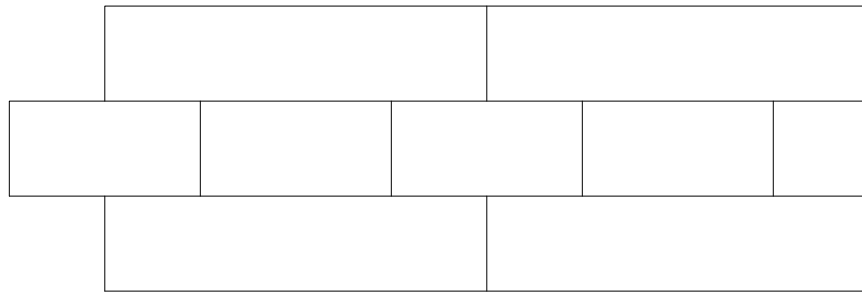
1
5 TYPICAL FURRING LAYOUT
SCALE: 1/2" = 1'-0"

- FURRING TO BE PERPENDICULAR TO LENGTH OF PANEL
- ENDS TO BE STAGGERED AND FALL ON FURRING
- PANELS TO BE SCREWED TO FURRING (SEE FASTENER TABLE FOR TYPE AND SPACING)
- CONFIGURATION APPLIES TO ALL SIZES (2X4 PANEL SHOWN)

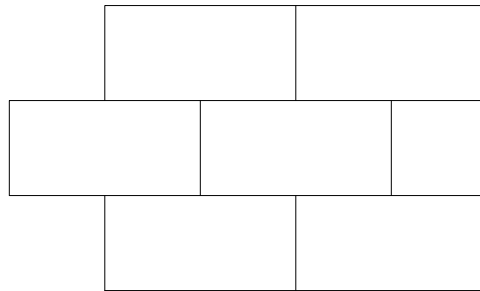
NOMINAL	PANEL SIZE	
	2X4	2X8
ACTUAL SIZE	24" X 48"	24" X 96"
RECOMMENDED FURRING SPACING	24" O.C.	24" O.C.



TYPICAL 2X8 PANEL LAYOUT



2X8 / 2X4 PANEL LAYOUT



TYPICAL 2X4 PANEL LAYOUT

- ALL ENDS MUST BE STAGGERED (AS SHOWN)
- ALL ENDS MUST FALL ON FURRING OR DRYWALL T-GRID
- 2X8 PANELS AND 2X4 PANELS CAN BE USED INTERCHANGEABLY (ONE 2X4 PANEL IS EXACTLY HALF THE LENGTH OF ONE 2X8 PANEL)

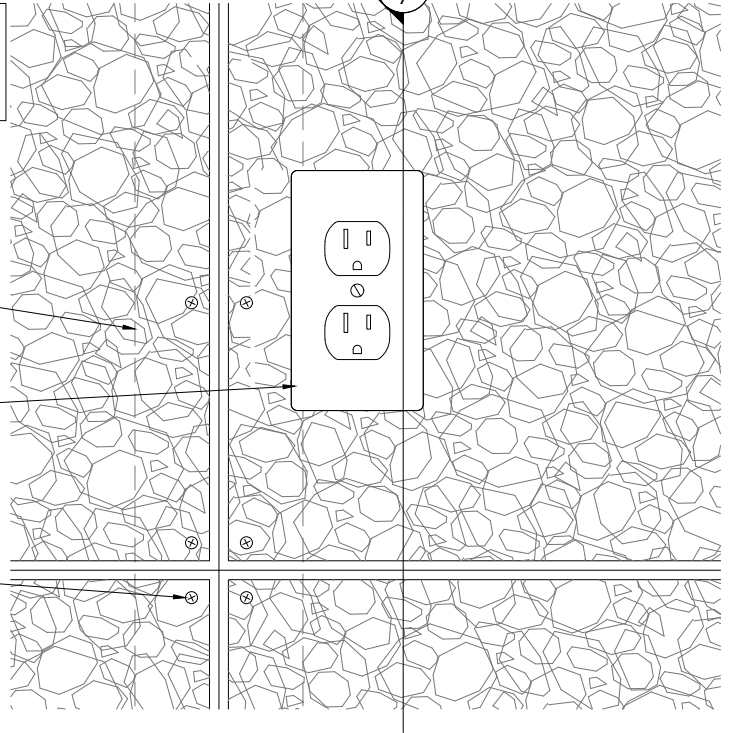
2
7

NOTE: DETAILS APPLY FOR ALL MOUNTING
OPTIONS (MOUNTING OPTION 2 SHOWN)

FURRING (BY OTHER: 1" X 3 1/2"
SHOWN)

OUTLET PENETRATION
FIELD CUT

FASTENER INTO FURRING
(SEE FASTENER TABLE FOR
TYPE AND SPACING)



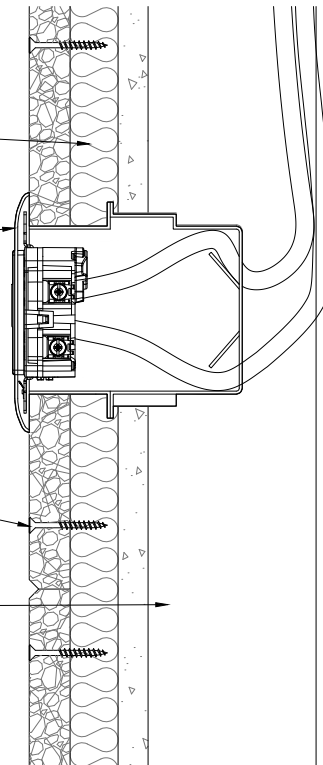
1
7 TYPICAL OUTLET ELEVATION
SCALE: 3" = 1'-0"

CFAB ACOUSTICAL INSULATION
(OPTIONAL)

OUTLET PENETRATION
FIELD CUT

FASTENER INTO FURRING
(SEE FASTENER TABLE FOR
TYPE AND SPACING)

TYP. WALL ASSEMBLY (BY OTHER)



2
7 TYPICAL OUTLET SECTION
SCALE: 3" = 1'-0"



123 Columbia Court North, Chaska,
Minnesota 55318 P. 800.527.6253

ENVIROACOUSTIC WOOD WOOL - DIRECT ATTACH WALL
OUTLET DETAIL

SCALE: AS NOTED

LAST REVISED: 7/6/2022

DRAWN BY: TL

DO NOT SCALE DRAWING. FIGURED DIMENSIONS ARE TO BE FOLLOWED. READ THIS DRAWING IN CONNECTION WITH GENERAL ARCHITECTURAL PLANS, STRUCTURAL PLANS, AND OTHER RELATED DRAWINGS. THESE DRAWINGS REPRESENT ASI'S UNDERSTANDING AND INTERPRETATION OF THE ARCHITECTURAL DRAWINGS AND HOW ASI PRODUCTS RELATE TO THE PROJECT. COPYRIGHT ASI © 2022

SHEET NUMBER

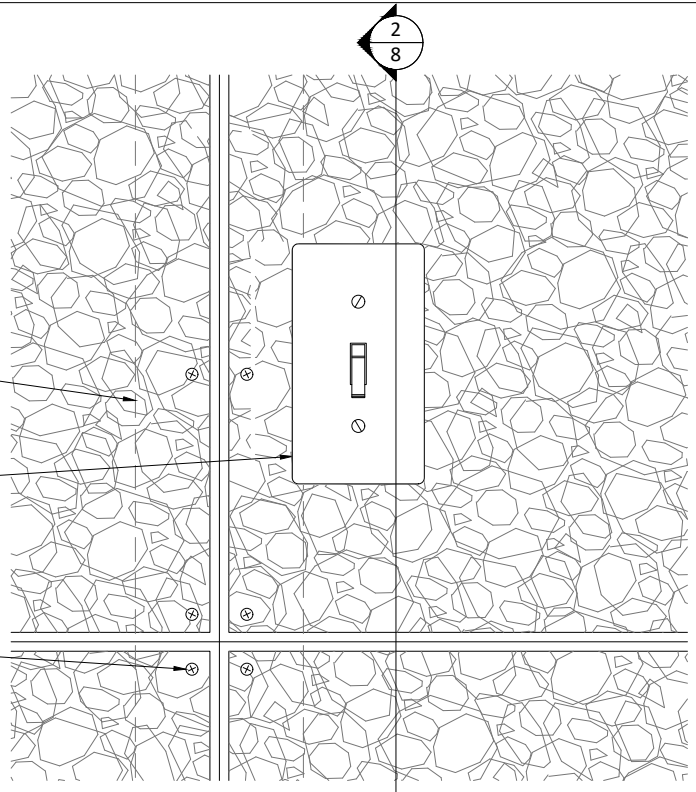
7

NOTE: DETAILS APPLY FOR ALL MOUNTING OPTIONS (MOUNTING OPTION 2 SHOWN)

FURRING (BY OTHER: 1" X 3 1/2" SHOWN)

LIGHT SWITCH PENETRATION FIELD CUT

FASTENER INTO FURRING (SEE FASTENER TABLE FOR TYPE AND SPACING)



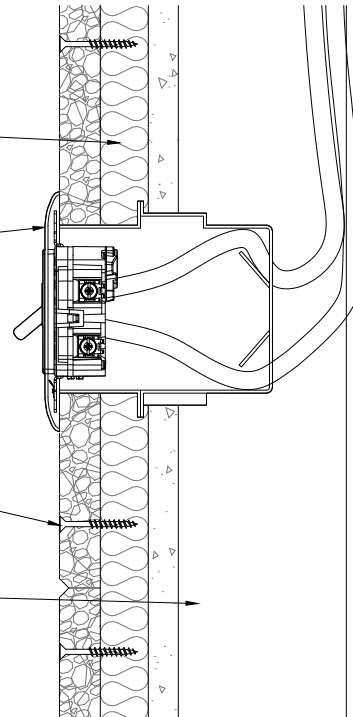
1/8 TYPICAL LIGHT SWITCH ELEVATION
SCALE: 3" = 1'-0"

CFAB ACOUSTICAL INSULATION (OPTIONAL)

LIGHT SWITCH PENETRATION FIELD CUT

FASTENER INTO FURRING (SEE FASTENER TABLE FOR TYPE AND SPACING)

TYP. WALL ASSEMBLY (BY OTHER)



2/8 TYPICAL LIGHT SWITCH SECTION
SCALE: 3" = 1'-0"



123 Columbia Court North, Chaska, Minnesota 55318 P. 800.527.6253

ENVIROACOUSTIC WOOD WOOL - DIRECT ATTACH WALL LIGHT SWITCH DETAIL

SCALE: AS NOTED

LAST REVISED: 7/6/2022

DRAWN BY: TL

DO NOT SCALE DRAWING. FIGURED DIMENSIONS ARE TO BE FOLLOWED. READ THIS DRAWING IN CONNECTION WITH GENERAL ARCHITECTURAL PLANS, STRUCTURAL PLANS, AND OTHER RELATED DRAWINGS. THESE DRAWINGS REPRESENT ASI'S UNDERSTANDING AND INTERPRETATION OF THE ARCHITECTURAL DRAWINGS AND HOW ASI PRODUCTS RELATE TO THE PROJECT. COPYRIGHT ASI © 2022

SHEET NUMBER

8